

Project Description

St. Marys Cement (SMC) is proposing a new limestone quarry on a 158 hectare site located in the City of Hamilton (in the former Township of Flamborough), north of Concession 11 E between Centre Road and Milburough Line.

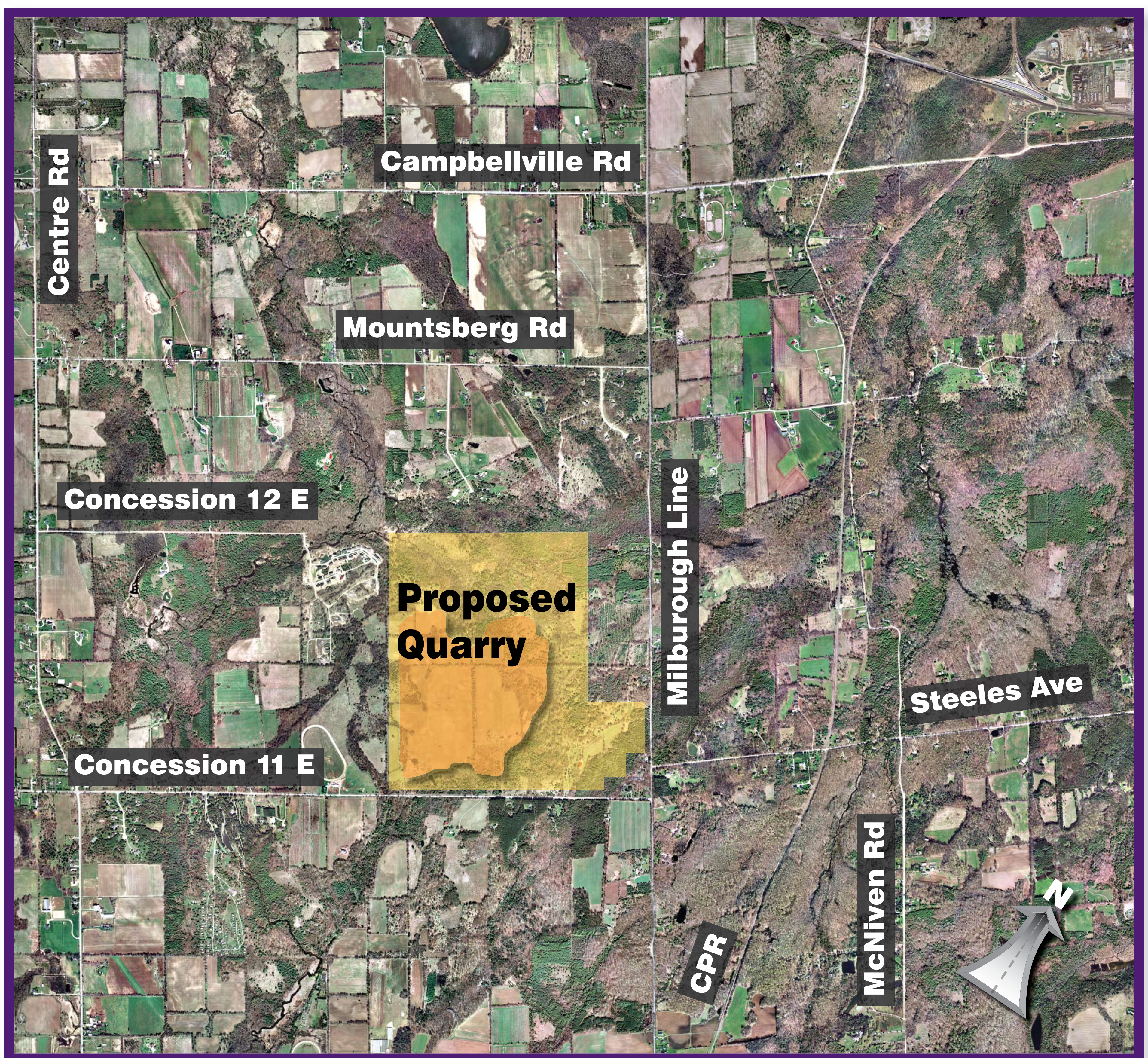
The quarry would supply a variety of construction aggregate products for use in roadway building and other infrastructure projects, residential, industrial and commercial construction sites within the Greater Golden Horseshoe area.

Over 50% of aggregates produced in Ontario are used by public authorities for the construction and maintenance of public infrastructure (Source: Ministry of Natural Resources).

The proposed quarry could supply up to 3 million tonnes of aggregate materials annually.

Dolostone is the most durable aggregate material in Southern Ontario and is used in:

- Granular base in asphalt mixes and structural concrete for sidewalks, bridges, roads and streets
- Structural concrete for buildings bridges, sidewalks, and airport runways.



Not to scale

 Area to be extracted